


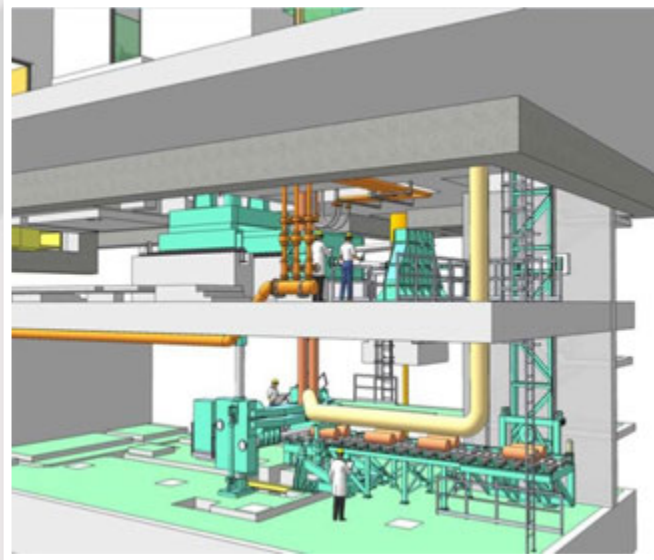
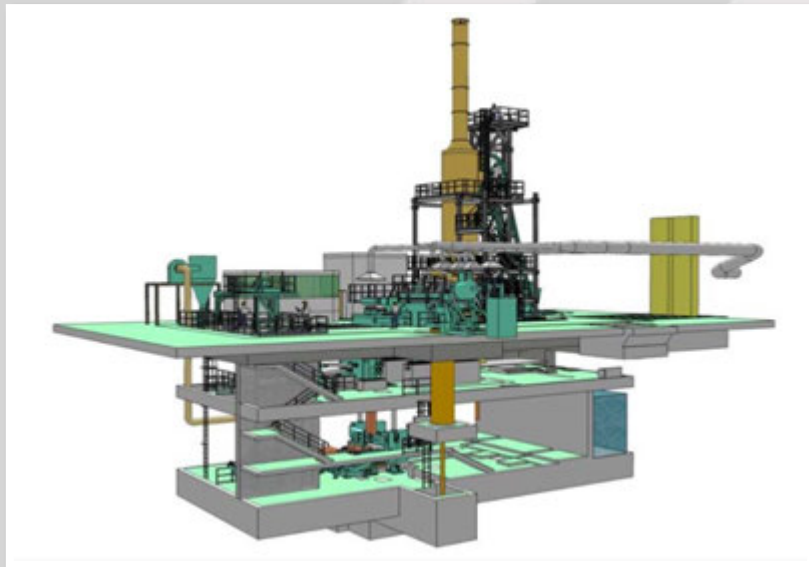
Melting & Casting Technology



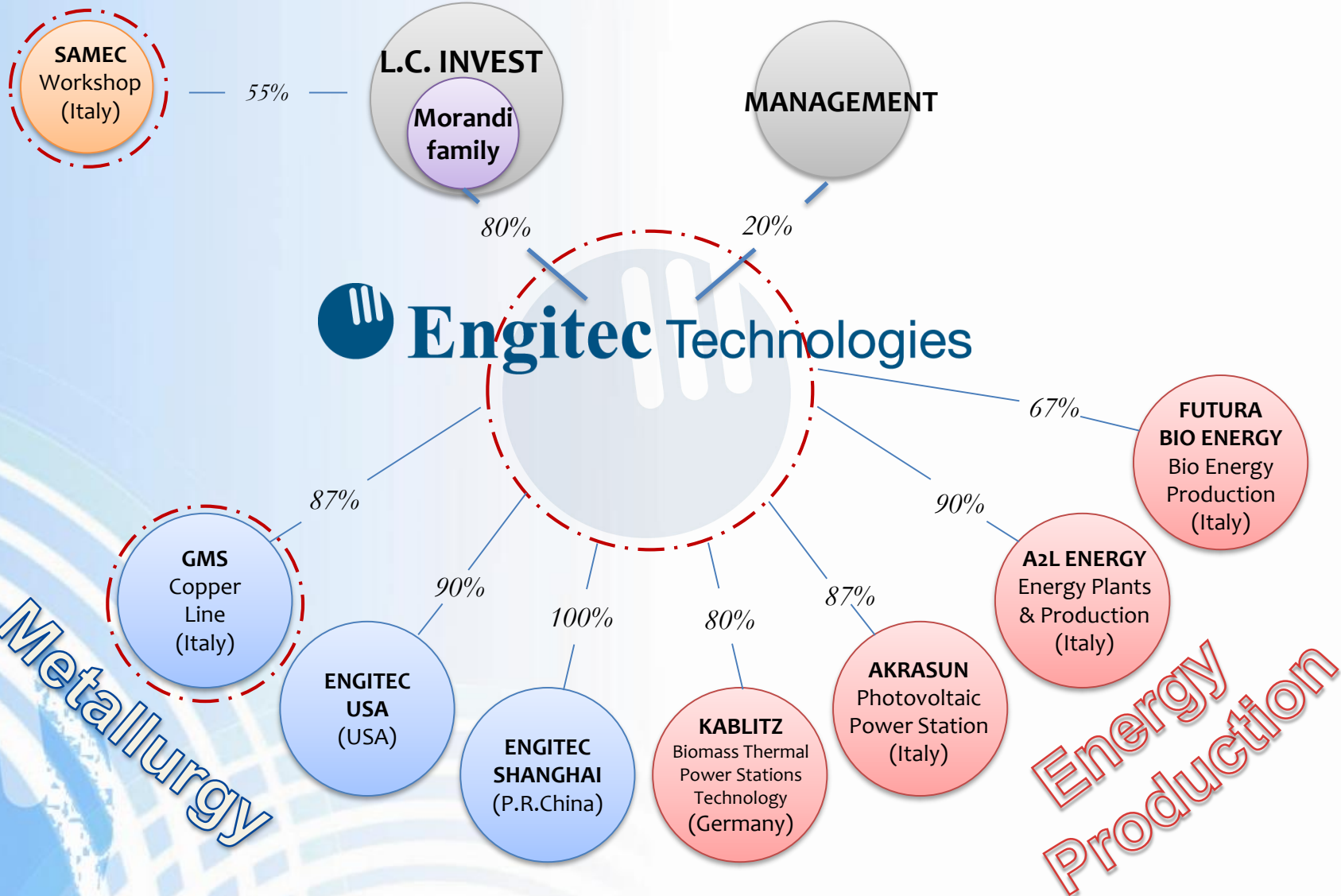
TRANSFER OF THE KNOW HOW

 **GMS** is born from the merging of **Ateco Impianti s.r.l.** and **PRO.M.E.S.** The two companies have been in cooperation for many years for design and manufacturing of foundry plants. Together and individually, have designed, manufactured, installed and started several plants all around the world, both for non-ferrous or ferrous metals.

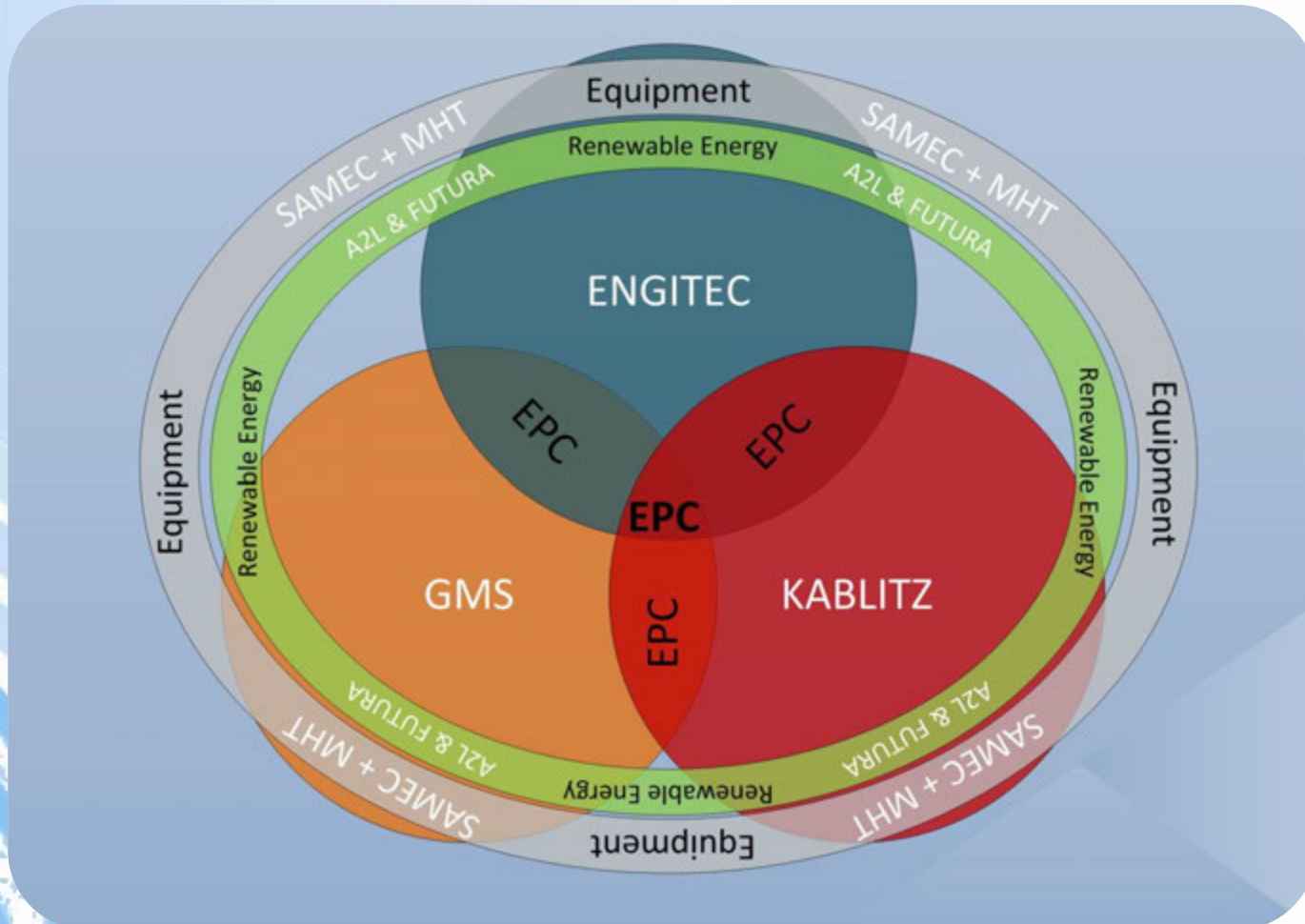
GMS, part of Engitec group, also purchased the brand of the former Calamari 



Our Group



The Group Integration



The Numbers



3.000m² Headquarter Offices, **600m²** Headquarter laboratories, **30.000m²** manufacturing workshop, **8.500 tons/year** of equipment manufactured, **250** persons involved of which **125** in Headquarter Engineering offices and **15** in Owned Foreign Companies and Offices while **110** in Manufacturing Workshop, **80 Millions Euro** consolidated Revenues, **5** continents and **35** Countries experience.



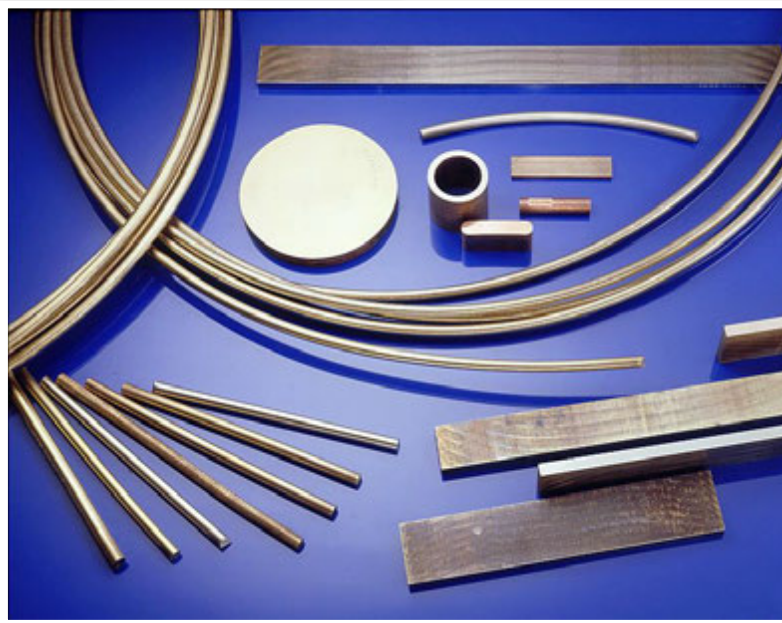
GMS
Global Metallurgical Solutions

MELTING TECHNOLOGY

- Coreless Medium Frequency Type
- Main Frequency Channel Type
- Automatic Pouring Systems
 - Induction Heaters
 - IGBT Technology



CONTINUOUS & SEMICONTINUOUS CASTING LINES FOR COPPER ALLOYS



WIRES - TUBES AND BARS - BILLETS

MORE THAN 100 CLIENTS ALL OVER THE WORLD



PLANTS IN THE WORLD

- Lead Recycling Plants
- Al Recycling Plants
- Zinc Recycling Plant
- Cu Semiproducts Plants
- Cu Furnace Units
- Cast Iron Furnace Units
- Continuous Casting Units
- Semi-Continuous Casting Units
- Induction Furnaces



GMS

Global Metallurgical Solutions

MELTING & CASTING TECHNOLOGY



HEADQUARTERS:

GMS S.r.l.

Via Borsellino e Falcone, 31
20026 Novate Milanese - Milano - Italia
Tel. +39.02.3820760
info@gms-egt.com
www.gms-egt.com



WORKSHOP

Via Giulio Pastore 5
28805 Vogogna (VB) • ITALY
Phone +39 0324 842550
Fax +39 0324 848843